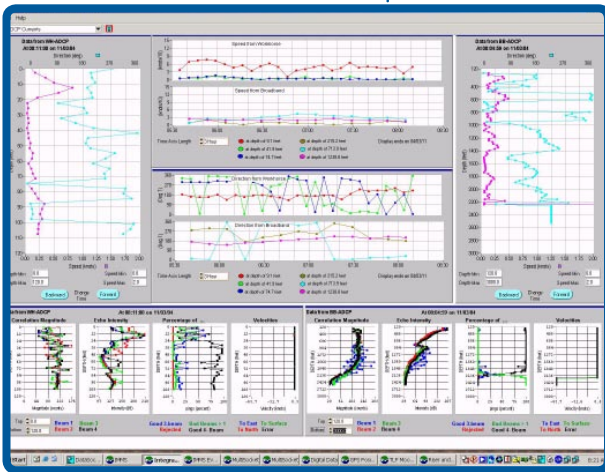


## Real World Data. Real Time Decisions.



*IRMS allows capture and display of multiple met-ocean sensors in real-time, configurable displays.*

### IRMS (Integrated Real-time Monitoring System)

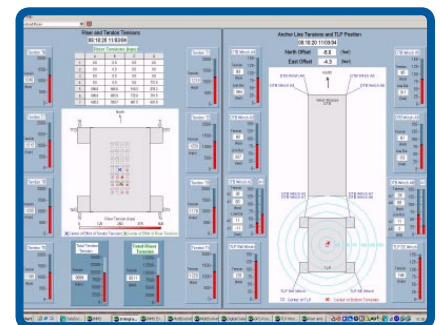
is a software application for monitoring data from multiple sensors to guide operational decisions in time to make a difference.

Woods Hole Group developed IRMS as the foundation for monitoring systems. IRMS co-exists with operational control systems, and provides a new level of real-time information to multiple workstations from a variety of data sources. This robust system can be used by:

- Offshore oil exploration and production platforms
- Port & harbor navigation authorities
- Power generating facilities
- Environmental monitoring and management organizations

### IRMS Features

- Accepts data from a variety of input sensors (waves, currents, tides, temperature, meteorological systems, riser and anchor tensions, etc.). These multiple data sources are shown on configurable integrated displays.
- Customized displays provide the exact information needed to make decisions in real-time.
- Data archives are automatically set up to preserve information for analysis and reporting.



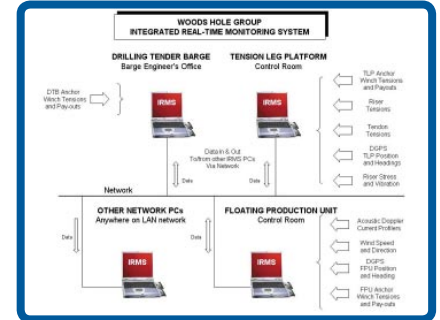
*IRMS can capture and display data from complex systems such as riser and anchor tensions to enable monitoring of these physical systems in real-time.*

- **Coastal Sciences, Engineering & Planning**
- **Oceanography & Measurement Systems**
- **Aquatic Environmental Assessment**

*(continued)*

### IRMS Features *(continued)*

- Network configuration enables data sharing with multiple users at multiple workstations. When coupled with satellite links or other telemetry, it is possible for users across the world to monitor data in real-time.
- User-defined warning and alarms can be designed to provide real-time aids for rapid decision-making.
- Customized data analysis modules provide in-depth support for decision-making that requires information beyond the raw data.



*IRMS' network configuration means that real-time data can be evaluated at different locations with customizable displays. You get just the information needed in the form that you need it.*

If system integration and access to real-time data are requirements of your operations, IRMS should be at the center of your design. To learn more, please contact Robert Hamilton or Dr. Bruce Magnell at:

Woods Hole Group, Inc.  
81 Technology Park Drive  
East Falmouth, MA 02536 USA

Tel: (+1) 508.540.8080

Fax: (+1) 508.540.1001

[www.woodsholegroup.com](http://www.woodsholegroup.com)